

Dry Potions



Bath Salts



For a base salt, use plain Epsom salts or a blend of Epsom salts and table, sea or mineral salts. Place about two cups of base salt into a clean, dry quart jar. Add fragrances and coloring. Place lid onto jar, tighten and shake vigorously until well blended. Store in an airtight, well-labeled glass container to prevent from going stale.

Air Bath

Needed:

- 3 parts lavender
- 2 parts rosemary
- 1 part peppermint
- 1 part bergamot
- 1 part mint
- 1 part bouquet

Color: Yellow

Use to attune with the powers of Air, for divination, aiding the memory, concentration, clear thinking, visualization and study

Angel

Needed:

- 15 drops lavender oil
- 10 drops almond extract
- 10 drops vanilla extract

Color: Pink or light green

For contacting the angelic realms

Astral Flight

Needed:

- 10 drops orange oil
- 10 drops anise oil
- 5 drops jasmine oil
- 5 drops eucalyptus oil
- 5 drops wintergreen oil

Color: Light blue or yellow

For astral projection

Blessing

Needed:

- 20 drops almond extract
- 10 drops rose oil
- 5 drops lavender oil
- 5 drops lemon oil
- 3 drops cinnamon oil

Color: Blue

To help you connect to your divine source

Bright Aura

Needed:

- 15 drops peppermint oil
- 10 drops lavender oil
- 10 drops vanilla extract
- 5 drops almond extract

Color: None

To clean the negatives from personal energy

Celibacy Bath

Needed:

- 4 parts lavender
- 2 parts camphor

Color: White

Add to a tub of tepid water — not hot. Bathe in this blend when you wish to cool down

Circle Bath

Needed:

- 3 parts rosemary
- 2 parts myrrh
- 2 parts sandalwood
- 1 part frankincense

Color: Purple

Bathe in before any form of magickal working to strengthen, purify and prepare yourself for ritual

Detoxifying Bath

Needed:

- 1 cup sea salt, Epsom salts, or a mix of half and half
- 2 drops frankincense oil
- 3 drops tea-tree oil
- 2 drops bergamot oil

Uses: Use for three days after you do a healing spell, or whenever you need it. Makes enough for four baths.

Add the oils to the salt, and mix thoroughly with a fork. Keep this in a jar with a tight lid, out of direct sunlight.

Detoxifying Bath

Needed:

- ¼ cup sea salt or Epsom salts
- 5 tablespoons dried sage
- 5 tablespoons dried rosemary

Bundle the herbs into a clean piece of cloth. Hang the bundle on the water spout as you run a hot bath, and stir the salts in right before you bathe. Makes enough for one bath.

Dream Time

Needed:

- 10 drops jasmine oil
- 5 drops lavender oil
- 5 drops orange oil

Color: Light blue

To enhance dream recall

Earth Bath

Needed:

- 4 parts patchouli
- 3 parts cypress
- 1 part vetivert

Color: Green

Use in attuning with the Earth, or for spells involving money, foundation, stability, creativity, fertility, ecology and so on

Exorcism Bath

Needed:

- 3 parts frankincense
- 3 parts sandalwood
- 2 parts rosemary
- 1 drop clove oil

Color: White

Bathe in this mixture for a heavy psychic cleansing. Splash fresh water over your body after the bath

Note: Do not use more than one drop clove oil (may irritate)

Fire Bath

Needed:

- 3 parts frankincense
- 2 parts basil
- 2 parts juniper
- ½ part orange

Color: Red

For use in attuning with the element of Fire, or for rituals involving strength, courage, passion, lust and so on.

Flowery Love Bath

Needed:

- 3 parts palma rosa
- 2 parts lavender
- 1 drop rose (more may be added)

Color: Pink

Bathe in this mixture to attract love and to expand your ability to give and receive love

Healing Bath

Needed:

- 3 parts niaouli
- 2 parts eucalyptus
- 1 part sandalwood

Color: Dark blue

For use in speeding healing. Release the ailment into the water. Splash fresh water over your body before toweling

Help

Needed:

- 10 drops peppermint oil
- 10 drops cinnamon oil
- 10 drops lemon oil
- 10 drops vanilla extract
- 10 drops almond extract

Color: Orange

When you need help

High Awareness Bath

Needed:

- 3 parts cedar wood
- 2 parts sandalwood
- 1 part frankincense

Color: Purple

Bathe in this mixture to direct your consciousness toward higher things, to promote spirituality and to combat earth obsessions such as uncontrolled spending, overeating, sluggishness and all forms of unbalanced materialism

Lavender Bath Salt

Needed:

- Equal parts:
 - Epsom salts
 - Borax
 - Sea salt
- Mixing bowl
- Lavender essential oil
- Pouch or jar

In a mixing bowl, combine the three salts and mix them together thoroughly.

Add several drops of lavender essential oil to the salts and sift them together. Let the mixture sit a while before you decide to add additional drops of oil. The oil will permeate the salts gradually, and you may not need as much lavender oil as you might think.

Store the salts in a pouch or jar and add them to your bathwater as a beautiful ingredient to a ritual bath.

Love Bath

Needed:

- 3 parts rosemary
- 2 parts lavender
- 1 part cardamon
- 1 part yarrow

Color: Pink

For promoting and attracting love. Use with visualization, as with all of these formulas

Lust Bath

Needed:

- 3 parts sandalwood
- 2 parts patchouli
- 1 part cardamon

Color: Red

For promoting lustful desires

Passages

Needed:

- 10 drops lime oil
- 10 drops lemon oil
- 10 drops peppermint oil
- 10 drops almond extract

Color: Your choice

To help cope with major life changes

Personal Power

Needed:

- 10 drops of your favorite scent
- 10 drops lemon oil
- 5 drops peppermint oil
- 5 drops orange oil

Color: Your choice

To increase personal energy levels

Protection Bath

Needed:

- 3 parts rosemary
- 2 parts frankincense
- 1 part lavender

Color: White

Bathe in this mixture daily to strengthen your psychic armor and to stave off all manner of attacks — physical, mental, spiritual, psychic and emotional

Psychic Bath

Needed:

- 4 parts yarrow
- 1 part bay

Color: Light blue

Use this blend in baths to strengthen your psychic awareness

Purification Bath

Needed:

- 3 parts geranium
- 2 parts rosemary
- 1 part frankincense

Bathe in this blend to purify body, spirit and soul

Sacred Rites

Needed:

- 10 drops lemon oil
- 10 drops lavender oil
- 5 drops cinnamon oil
- 5 drops jasmine oil
- 5 drops anise oil

Color: Dark blue or green

Use before any spell or ritual rite

Sea Witch Bath

Needed:

- 3 parts lotus bouquet
- 2 parts lavender
- 1 part rosemary

Color: Dark blue

Add a bit of Sea Salt to the salt base. Bathe for a gentle purification prior to magickal works

Spell Breaker

Needed:

- 10 drops clove oil
- 10 drops peppermint oil
- 10 drops lemon oil
- 10 drops eucalyptus

Color: Dark green

Use to break spells cast upon you

Spiritual Bath

Needed:

- 4 parts sandalwood
- 2 parts myrrh
- 1 part frankincense
- 1 drop cinnamon

Color: Purple

Use to increase your awareness of the Divine, especially before religious rituals

Water Bath

Needed:

- 2 parts chamomile
- 2 parts yarrow
- 1 part ylang-ylang
- 1 part palma rosa

Color: Dark blue

Use for attuning with the element of Water, or for love, psychic awareness, friendships, healing and so on

Water Bath

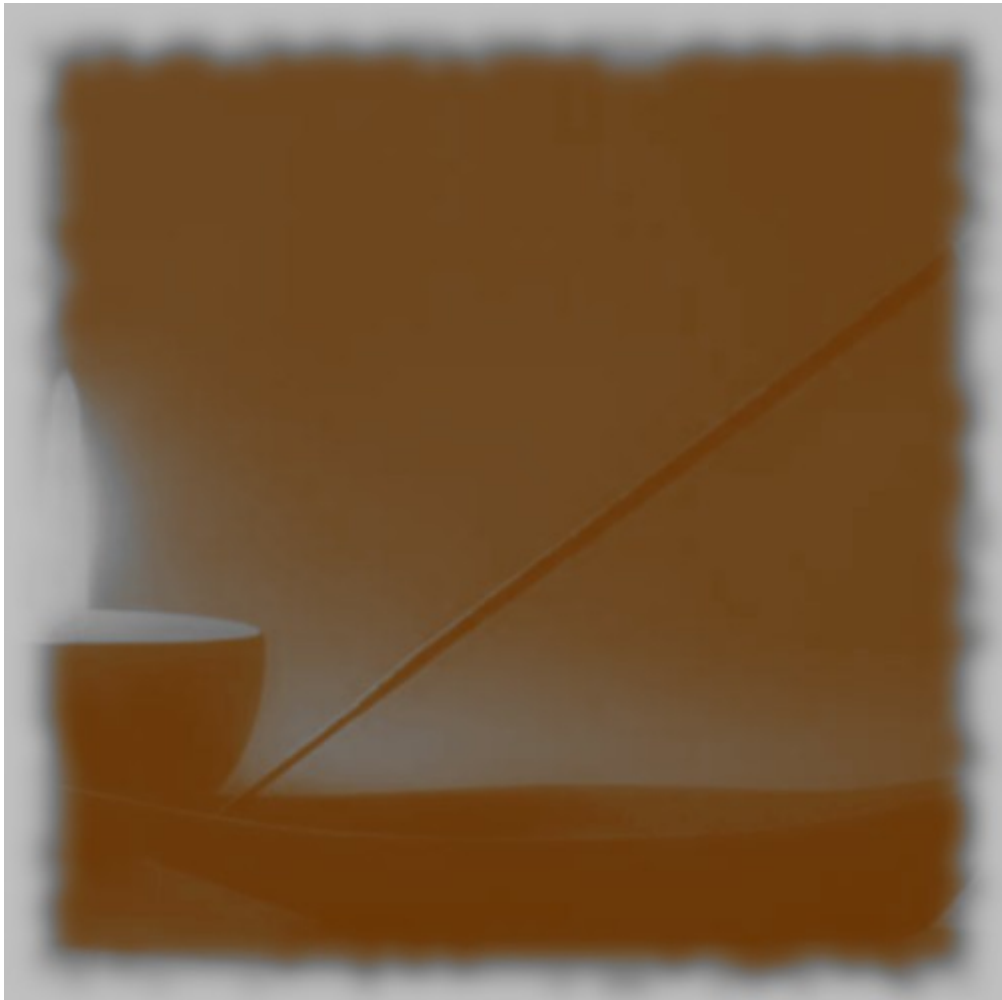
Needed:

- 2 parts palma rosa
- 1 part myrrh
- 1 part geranium

Color: Dark blue

Use for attuning with the element of Water, or for love, psychic awareness, friendships, healing and so on

Incense



Abramelin Incense

Needed:

- 2 parts myrrh
- 1 part wood aloe
- A few drops cinnamon oil

Burn to contact spirits during rituals or as a simple consecration incense to sanctify the altar or magickal tools.

Aine of Knckanie Incense

Needed:

- ½ ounce (15 grams) meadowsweet flowers and leaves (gathered when the plant is at full bloom and dried)
- ½ ounce (15 grams) finely chopped pine needles
- ½ fluid ounce (15 cc) lemon verbena oil

Air Incense

Needed:

- 4 parts benzoin
- 2 parts gum mastic
- 1 part lavender
- 1 pinch wormwood
- 1 pinch mistletoe

Burn to invoke the powers of the element of Air, or to increase intellectual powers; to obtain travel; for communication, study and concentration, or to end drug addiction. Smolder during divinatory rituals.

All-Purpose Incense

Needed:

- 1 tablespoon rosemary
- 1 tablespoon cinnamon
- Dry peel of one lemon
- 1 teaspoon thyme
- 1 teaspoon almond extract
- 1 teaspoon lemon extract
- 5 drops of your favorite scent

Altar Incense

Needed:

- 3 parts frankincense
- 2 parts myrrh
- 1 part cinnamon

Burn as a general incense on the altar to purify it and to promote ritual consciousness during rituals.

Amun-Ra Incense

Needed:

- 4 ounces frankincense
- 3 ounces cinnamon
- 1 ounce mastic
- 2 drops olive oil
- 3 drops oil of rose
- 3 drops tincture of myrrh

Blend the three resins, and powdered them very finely. Blend the oils and add them to the resins. This should be kept in an airtight jar in the dark for three months before use.

Ancient Ancestors Incense

(to honor those that have passed on)

Needed:

- 1 tablespoon anise seed
- 1 tablespoon ground pine needles
- 1 teaspoon sage
- 1 teaspoon thyme
- 1 teaspoon rosemary
- 1 teaspoon fennel seed
- 1 teaspoon basil
- 1 teaspoon almond extract

Aphrodite Incense

Needed:

- 1 part cinnamon
- 1 part cedar
- A few drops cypress oil

Burn during rituals designed to attract love.

Apollo Incense

Needed:

- 4 parts frankincense
- 2 parts myrrh
- 2 parts cinnamon
- 1 part bay

Burn during divination & healing rituals.

Apparition Incense

Needed:

- 3 parts wood aloe
- 2 parts coriander
- 1 part camphor
- 1 part mugwort
- 1 part flax
- 1 part anise
- 1 part cardamom
- 1 part chicory
- 1 part hemp

Burn to cause apparitions to appear, if you **really** want this to happen.

Aquarius Incense

Needed:

- Herbs (in equal parts)
 - Fenugreek
 - Pine
 - Broom
 - Clover
- Oil
 - Pine

Aquarius Incense

Needed:

- 1 part sandalwood
- 1 part cypress
- 1 part pine resin

Burn as a personal altar or household incense to increase your own powers.

Arcady Circle Incense

Finely reduced:

- 25 grams frankincense
- 17 grams pine needles
- 10 grams patchouli
- 10 grams mugwort
- 10 grams vervain
- 1 grams bay leaves (about 10)

Add 1 tablespoon each:

- Musk oil
- Patchouli oil
- Lavender oil
- Vanilla oil
- Honeysuckle oil
- Orange Blossom oil

Add:

- Powdered charcoal to absorb oil
- Approximately 5-10% (by weight) saltpeter

Aries Incense

Needed:

- Herbs (in equal parts)
 - Angelica
 - Cedar
 - Ginseng
 - Basil
 - Pine
- Oil
 - Cedar

Aries Incense

Needed:

- 2 parts frankincense
- 1 part juniper
- 3 drops cedar wood oil

Burn as a personal altar or household Incense to increase your own powers.

Astral Travel Incense

Needed:

- 3 parts sandalwood
- 3 parts benzoin
- 1 part mugwort
- 1 part dittany of Crete

Burn a small amount in the room to aid projecting the astral body.

Athena Oil and Incense

The olive is sacred to Athena, so use pure olive oil as an anointing oil in particular, rub between the palms of your hands and anoint your feet, forehead and lips. For the incense:

- 1 ounce (30 grams) cedar wood chips
- ½ ounce (15 grams) camphor
- 7 drops of musk oil
- Female sweat (as much as possible)
- 6 olives unstuffed and preferably black

Blend the first four ingredients well, at the full moon, and add the olives. Put in a jar and leave for one month to mature. Then remove the olives (which will have imparted their essences to the rest) and throw them away. Stuffed olives, both black and green, are an obvious food for a ritual of Athena, also stuffed vine leaves, a very Athenian dish. If possible, of course, the wine should be Greek — especially Restina, though that is an acquired taste.

Attunement to Spirit World

Needed:

- ¼ teaspoon ground sandalwood or ½ teaspoon sandalwood chips
- ¼ teaspoon balm of Gilead
- 1/8 teaspoon sage

Babylonian Ritual Incense

Needed:

- 3 parts cedar
- 2 parts juniper
- 1 part cypress
- 1 part tamarisk

Burn during Babylonian and Sumerian magickal rituals, or when attuning with such deities as Inanna, Marduk, Enlil, Tiamat and others.

Banishing Incense

Needed:

- Bay leaves
- Cinnamon
- Red wine
- Rose petals
- Myrrh
- Salt

Eliminates all bad spirit forces. Should be burned in a ceremonial room during services. Also used in uncrossing (removes evil forces and hexes).

Bat's Blood Incense

Needed:

- Dragon's blood
- Myrrh
- Cinnamon

Burn to cast evil spirits and to place a hex on someone you wish to get even with (for black magick and hexing). This invokes only baneful spirits.

Bat's Eye Incense

Needed:

- Myrrh
- Dragon's blood
- Bayberry powder

Use for the same purpose as bat's blood Incense. Works equally well. (Use where eye of bat is needed).

Beltane Incense

Needed:

- 3 parts frankincense
- 2 parts sandalwood
- 1 part woodruff
- 1 part rose petals
- A few drops jasmine oil
- A few drops neroli oil

Burn during Wiccan rituals on Beltane or May Day for fortune, favors and to attune with the changing of the seasons.

Binding Incense

Needed:

- 4 parts nettle
- 4 parts thistle
- 4 parts knotgrass
- ¼ part nightshade
- ¼ part aconite (wolfs bane)

Burn with caution during outdoor rituals to destroy baneful habits or thoughts. Use small amounts only. Do not inhale fumes.

Born Again Incense

Needed:

- 3 parts frankincense
- 1 part mullein
- 1 part mums

Burn when distraught over the passing of a friend or loved one.

Business Incense

Needed:

- 2 parts benzoin
- 1 part cinnamon
- 1 part basil

Burn to attract customers.

Cancer Incense

Needed:

- Herbs (in equal parts)
 - Chamomile
 - Feverfew
 - Heather
 - Myrrh
- Oil
 - Myrrh

Cancer Incense

Needed:

- 2 parts myrrh
- 1 part sandalwood
- 1 part eucalyptus
- 1 part lemon peel (or a few drops of lemon oil)

Use as a personal altar or household Incense to increase your own powers.

Capricorn Incense

Needed:

- Herbs (in equal parts)
 - Mullein
 - Patchouli
 - Comfrey
 - Solomon's seal
- Oil
 - Patchouli

Capricorn Incense

Needed:

- 2 parts sandalwood
- 1 part benzoin
- A few drops patchouli oil

Use as a personal altar or household Incense to increase your own powers.

Ceremonial Magick Incense

Needed:

- 3 parts frankincense
- 2 parts gum mastic
- 1 part wood aloe

It can be used in general magickal workings to raise power & to purify the area.

Ceremonial Magick Incense

Needed:

- 2 parts frankincense
- 1 part wood aloe
- A few drops musk oil
- A few drops ambergris oil

It can be used in general magickal workings to raise power & to purify the area.

Circle Incense

Needed:

- 4 parts frankincense
- 2 parts myrrh
- 2 parts benzoin
- 1 part sandalwood
- 2 parts cinnamon
- 2 parts rose petals
- 3 parts vervain
- 3 parts rosemary
- 3 parts bay

Burn in the circle for all types of rituals and spells. Frankincense, myrrh and benzoin should definitely constitute the bulk of the mixture.

Cleansing Incense

Needed:

- 2 parts dragon's blood
- 1 part valerian root
- 1 part sulfur
- 1 part asafoetida

In conjunction with any banishing ritual this will remove any psychic or magical impression from your home. Then you can start fresh filling it with the energies you want. It may sound strange but it works!

Clearing Incense

Needed:

- 3 parts frankincense
- 2 parts myrrh
- 1 part sandalwood

Burn this Incense to clear your home of negative vibrations, especially when household members are arguing or when the house seems heavy and thick with anger, jealousy, depression, fear and other negative emotions. Leave the windows open while burning this mixture.

Consecration Incense

Needed:

- 2 parts wood aloe (or vanilla)
- 1 part mace (or nutmeg)
- 1 part frankincense
- 1 part benzoin

When purifying or consecrating magickal tools, jewelry, quartz crystals and other stones, smolder this incense and pass the tool through its smoke several times. So this while visualizing the fumes purifying the tool.

Courage Incense

Needed:

- 2 parts dragon's blood
- 1 part frankincense
- 1 part rose geranium leaves (or few drops rose geranium oil)
- A few drops tonka bouquet
- A few drops musk oil

Smolder this Incense when you lack courage. If you are in a situation where you cannot burn it, recall its scent and be strong. If tonka bouquet is unavailable use tonka tincture or vanilla extract.

Crystal Purification Incense

Needed:

- 2 parts frankincense
- 2 parts coral
- 1 part sandalwood
- 1 part rosemary
- 1 pinch finely powdered salt
- A small purified quartz crystal point

Pour a bit of Incense (leaving the crystal in the jar) onto charcoal. Smolder and pass the crystal to be purified through the smoke wafting away the stones impurities. Naturally, this Incense can be used in connection with the others recommended purifying rituals, or in place of them.

Curse-Breaker Incense

Needed:

- 2 parts sandalwood
- 1 part bay

Burn at night near an open window if you feel "cursed". Smolder this incense and visualize it banishing all negativity from you. Repeat this ritual for 7 nights during the Waning Moon, if possible or desirable.

Curse-Breaking Incense

Needed:

- 2 parts sandalwood
- 1 part bay
- 1 part rosemary

Burn at night near an open window if you feel "cursed". Smolder this incense and visualize it banishing all negativity from you. Repeat this ritual for 7 nights during the Waning Moon, if possible or desirable.

Curse-Breaking Incense

Needed:

- 2 parts frankincense
- 1 part rosemary
- 1 part dragon's blood

Burn at night near an open window if you feel "cursed". Smolder this incense and visualize it banishing all negativity from you. Repeat this ritual for 7 nights during the Waning Moon, if possible or desirable.

Diana of the Moon Incense

It is recommended that it be made in the hour and day of the Moon- i.e. the first or eighth hour after sunrise, or the third or tenth hour after sunset, on a Monday.

Thoroughly mix equal amounts of the following:

- Gum mastic
- Jasmine
- Mandrake
- Orris root

Add a few drops of wintergreen oil and moisten with a little clear mineral oil.

Divination Incense

Needed:

- 1 part clove
- 1 part chicory
- 1 part cinquefoil

Smolder during or directly before using Tarot cards, Runes, etc. **Beware:** This incense doesn't smell good!

Divination Incense

Needed:

- 2 parts sandalwood
- 1 part orange peel
- 1 part mace
- 1 part cinnamon

Smolder during or directly before using Tarot cards, Runes, etc. This one smells better.

Divine Delight Incense

(to honor your personal deity)

Needed:

- 1 teaspoon nutmeg
- 1 teaspoon vanilla extract
- 1 teaspoon almond extract
- Petals of one carnation
- Petals of one rose
- Dry peel of one orange

Dream Incense

Needed:

- 2 parts sandalwood
- 1 part rose petals
- 1 part camphor
- Few drops tuberose bouquet
- Few drops jasmine oil

Burn a bit in the bedroom prior to sleep to produce psychic dreams. Remove the censer from the room before retiring. Use only genuine camphor.

Earth Incense

Needed:

- 2 parts pine resin or needles
- 1 part patchouli
- 1 pinch finely powdered salt
- A few drops cypress oil

Burn for invoking the powers of the element of earth for money, stability, etc.

Earth Incense (Planetary)

Needed:

- 1 part Pine needles
- 1 part Thyme
- Few drops patchouli oil

Burn to honor the Earth, and for all earth-revering rituals.

Egyptian Incense

Needed:

- 4 parts frankincense
- 3 parts gum arabic
- 2 parts myrrh
- 1 part cedar
- 1 part juniper
- 1 part calamus
- 1 part cinnamon

Burn during Egyptian rituals, or to honor any ancient Egyptian deity, such as Isis, Thoth, etc.

Egyptian Love Incense

Needed:

- ½ ounce benzoin
- ½ ounce cinnamon
- ½ ounce galangal
- ½ ounce frankincense
- 1 ounce myrrh
- 3 drops honey
- 3 drops lotus oil
- 1 drop rose oil
- Pinch of dried orris root

Eightfold Hearth Incense

Needed:

- 2 parts dragon's blood
- 2 parts myrrh
- 1 part juniper
- ½ part saffron
- 1 part orange flowers
- ½ part rose petals

Burn for a safe, warm, loving home. Also give as a gift to others.

Enchanted Dreams Incense

Needed:

- 2 teaspoons charcoal
- 1 teaspoon benzoin
- 1 teaspoon orris root
- 1 teaspoon camphor
- ½ teaspoon must root
- 15 drops musk oil
- 10 drops ambergris oil

Esbat Incense

Needed:

- 4 parts frankincense
- 3 parts myrrh
- 2 parts benzoin
- 1 part sandalwood
- 1 part gardenia petals
- ½ part orris
- ½ part thyme
- ½ part poppy seed
- ½ part rose petals

Burn during rituals and spells on the Full Moon, or at any Wiccan gathering other than the Sabbats.

Exorcism Incense

Needed:

- 3 parts frankincense
- 1 part rosemary
- 1 part bay
- 1 part avens
- 1 part mugwort
- 1 part St. John's wort
- 1 part basil
- 1 part angelica

Burn with open windows in disturbed places as heavy purificatory Incense. Breathe through your mouth while smoldering this.

Fall Sabbat Incense

Needed:

- 3 parts frankincense
- 2 parts myrrh
- 1 part rosemary
- 1 part cedar
- 1 part juniper

Burn during fall and winter Sabbat rituals.

Fire Incense

Needed:

- 3 parts frankincense
- 2 parts dragon's blood
- 1 part red sandalwood
- 1 pinch saffron
- A few drops musk oil

Smolder for summoning the powers and beings of Fire. Also use for success, strength, protection, health, passion and other similar goals. Genuine Saffron is expensive, so only a pinch. You can use Orange peel instead.

Fire of Azrael Incense

Needed:

- ½ ounce sandalwood chips
- ½ ounce juniper berries
- ½ ounce cedar wood oil

Burn while scrying, or throw into coals of a fire once the flames have been quenched and gaze into them to see images form within them. the latter rite is best performed on beach at night. Also general Psychism-inducing.

"For Emergencies" Only

Needed:

- 3 parts frankincense
- 2 parts dragon's blood
- 2 parts myrrh
- 1 part rosemary
- 1 part asafetida*
- 1 part cayenne*
- 1 part grains of paradise
- 1 part rue*
- 1 part garlic*

Burn to be rid of foul demons, wrathful spirits, tax collectors, drunks and other noisome creatures. Stand back and hold your nose or better still, leave the room while this incense is smoldering. Those herbs marked with an asterisk aren't necessarily dangerous or baneful, but they emit a powerful smoke that is irritating to the eyes, nose and lungs.

Forest God Incense

Needed:

- 2 teaspoons charcoal
- 2 teaspoons frankincense
- 1 ½ teaspoons pine needles
- 1 teaspoon must root
- 1 teaspoon white sandalwood
- 1 teaspoon cascarilla bark
- 1 teaspoon benzoin
- ½ teaspoon camphor
- 7 drops clove oil
- 10 drops musk oil
- 9 drops civit oil
- 9 drops cedar oil
- 8 drops ambergris oil
- 5 drops cinnamon oil

Frankincense Incense

Needed:

- 2 tablespoons frankincense
- 1 tablespoon powdered orris root
- 1 teaspoon powdered clove
- 1 tablespoon lemon oil

Combine and mix all but lemon oil. Put in a jar, seal and keep in a dark place for 2-3 months. For healing magick, Honor the Mother Goddess and Horned God.

Full Moon Ritual Incense

Needed:

- 2 parts sandalwood
- 2 parts frankincense
- ½ part gardenia petals
- ¼ part rose petals
- A few drops ambergris oil

Burn during Esbats or simply at the time of the Full Moon to attune with the Goddess.

Full Moon Ritual Incense

Needed:

- 3 parts gardenia petals
- 2 parts frankincense
- 1 part rose petals
- ½ part orris
- Few drops sandalwood oil

Gemini Incense

Needed:

- Herbs (in equal parts)
 - Eyebright
 - Hops
 - Lemongrass
 - Sage
- Oil
 - Rosemary

Gemini Incense

Needed:

- 2 parts gum mastic
- 1 part citron or 1 part mixed orange and lemon peel
- ½ part mace

Use as a personal altar or household Incense to increase your powers.

General Magickal Incense

Needed:

- 3 parts frankincense
- 2 parts gum mastic
- 1 part wood aloe

Raise power and purify area.

Goddess Incense

Needed:

- ½ dram cypress oil
- ½ dram olive oil
- ½ ounce dried rose petals
- ½ ounce white willow bark
- 3 dried rowan berries
- 1 teaspoon anise seeds

Good Omen Incense

Needed:

- 5 rose petals
- 1½ ounce myrrh
- 1 ounce dragon's blood
- ½ ounce saffron
- ½ ounce orange blossoms
- ½ ounce juniper
- ½ ounce sage
- 1 dram frankincense

Greek God/Goddess Incense

Needed:

- 4 parts frankincense
- 2 parts myrrh
- 1 part pine
- 1 part rose petals
- 1 part sage
- 1 part white willow bark
- Few drops olive oil
- Few drops cypress oil

Burn to honor them.

Healing Incense

Equal parts by weight:

- Heal all (*Prunella Vulgaris*)
- Hyssop
- Vervain
- Aloeswood

½ part by weight:

- Dragon's blood
- Mandrake
- Cinquefoil

Healing Incense

Needed:

- 1 part rosemary
- 1 part juniper berries

Healing Incense

Needed:

- 2 parts myrrh
- 1 part cinnamon
- 1 pinch saffron

Healing Incense

Needed:

- 3 parts myrrh
- 2 parts nutmeg
- 1 part cedar
- 1 part clove
- ½ part lemon balm
- ½ part poppy seeds
- Few drops pine oil
- Few drops almond oil

Healing Incense

Needed:

- 2 parts juniper berries
- 1 part rosemary

Hecate Incense

Needed:

- 3 parts sandalwood
- 2 parts cypress
- 1 part spearmint (peppermint)

To honor her, burn at crossroads or during ritual at the waning of the Moon.

Hecate Incense

Needed:

- ½ teaspoon dried bay leaves
- ½ teaspoon dried mint leaves
- ½ teaspoon dried thyme
- Pinch of myrrh resin
- Pinch of frankincense resin
- 1-3 drops cypress oil
- 3 drops camphor oil

Help Incense

(when you need help)

Needed:

- 2 tablespoons cinnamon
- 2 tablespoons vanilla extract
- 1 tablespoon rosemary
- 1 tablespoon thyme
- 1 teaspoon clove
- 1 teaspoon ginger
- 1 teaspoon allspice
- 1 pinch salt

Herne Incense

Needed:

- ½ ounce deerstongue leaves
- ½ ounce patchouli leaves
- ½ ounce rue
- 1 ounce gum sanderac
- 1/3 ounce gum guiacum
- 26 drops vetivert oil

Make during the waxing Moon. Grind the deer's tongue, patchouli and rue extremely finely with pestle and mortar, and mix them. Grind the gum sandarac to gravel consistency, and the gum guaiacum extremely finely, add them to the others, and mix. Finally add the vetivert oil, and mix well.

Honors Incense

Needed:

- 2 parts benzoin
- 1 part wood aloe
- ½ part pepperwort (or Rue)

Burn for honors and favors.

Horned God Incense

Needed:

- 2 parts benzoin
- 1 part cedar
- 1 part pine
- 1 part juniper berries
- Few drops patchouli oil

Burn to honor Him in His many guises, especially during Wiccan rituals.

Horned God Incense

Needed:

- 7 drams tincture benzoin
- ½ dram sandalwood oil
- ½ dram myrrh oil
- ½ dram frankincense oil
- Saltpeter
- 1 ounce powdered charcoal
- Pinch of dried asafetida
- Pinch of dried blessed thistle
- Pinch of dried peppermint

House Purification Incense

Needed:

- 3 parts frankincense
- 2 parts dragon's blood
- 1 part myrrh
- 1 part sandalwood
- 1 part wood betony
- ½ part dill seed
- A few drops rose geranium oil

For once-a-month house cleansing. Burn in new home before moving in.

Imbolc Incense

Needed:

- 3 parts frankincense
- 2 parts dragon's blood
- 2 parts sandalwood
- 1 part cinnamon
- A few drops of red wine

To this mixture, add a pinch of the first flower (dry it first) that is available in your area of Imbolc. Burn during Wiccan ceremonies or Imbolc, or simply to attune with the symbolic rebirth of the Sun — the fading of winter and the promise of spring.

Incense Against an Incubus

Needed:

- 2 parts sandalwood
- 2 parts benzoin
- 2 parts wood aloe
- 1 part cardamom
- ½ part calamus
- ½ part birthwort
- ½ part ginger
- ½ part pepper
- ½ part cinnamon
- ½ part clove
- ½ part carnation
- ½ part nutmeg
- ½ part mace
- ½ part cubeb seed
- Few drops brandy

This mixture was believed to ward off the Incubus, a male demon or spirit that was believed to sexually tempt and abuse women. It might be used to ward off any male sexual abuser.

Isis Incense

Needed:

- 3 parts myrrh
- 2 parts sandalwood
- 1 part frankincense
- 1 part rose petals
- Few drops lotus bouquet

Burn during any type of magickal operation.

Job Search Incense

Needed:

- 1 part frankincense
- 1 part basil
- 1 part sandalwood
- ½ part vervain
- ½ part mugwort
- ½ part pansy
- ¼ part clove
- ¼ part cinnamon

Jupiter Incense

Needed:

- 2 parts wood aloe
- 1 part benzoin
- 1 part storax (or gum arabic)
- ¼ part ash seed
- Few drops olive oil
- 1 pinch powdered lapis lazuli

Mix and burn. This unusual formula includes a stone and could also be mixed together and carried as a Jupiterian talisman charm. Burn for spells involving riches, expansion, the law and luck.

Jupiter Incense

Needed:

- 3 parts frankincense
- 1 part mace
- 1 part cardamom
- ½ part balm of Gilead
- ¼ part pulverized pomegranate rind
- 1 pinch saffron
- Few drops ambergris oil

Mix and burn. This unusual formula includes a stone and could also be mixed together and carried as a Jupiterian talisman charm. Burn for spells involving riches, expansion, the law and luck.

Jupiter Incense

Needed:

- 1 part clove
- 1 part nutmeg
- 1 part cinnamon
- ½ part lemon balm
- ½ part citron peel (or equal parts dried lemon and orange peel)

Mix and burn. This unusual formula includes a stone and could also be mixed together and carried as a Jupiterian talisman charm. Burn for spells involving riches, expansion, the law and luck.

Kali Incense

This is an individual and personalized incense, for attunement to your own Dark of Moon.

- 1 ounce (30 grams) sandalwood chips
- 1 ounce (30 grams) dried jasmine flowers or 6 drops of jasmine oil
- ½ ounce (15 grams) dried rose petals
- 2 drops of your own menstrual blood

Blend and use for private meditation during the onset of your ministration.

Kitchen Witchen Incense

(house blessing)

Needed:

- 2 tablespoons dry lemon peel
- 1 tablespoon rosemary
- 1 tablespoon almond extract
- 1 teaspoon cinnamon
- 1 pinch garlic skins
- 1 teaspoon anise seed
- 1 teaspoon allspice
- 1 teaspoon coconut extract
- 1 pinch salt

Kyphi

Needed:

- 4 parts frankincense
- 2 parts benzoin
- 2 parts gum mastic
- 2 parts myrrh
- 1 part cedar
- 1 part galangal (or ginger)
- ½ part calamus (or vetivert)
- ½ part cardamom
- 7 raisins
- ½ part cinnamon
- ½ part cassia
- ½ part juniper berries
- ½ part orris
- ½ part cypress
- Few drops lotus bouquet
- Few drops wine
- Few drops honey

Mix the ground dry ingredients thoroughly. Let sit in an airtight container two weeks. In a separate bowl, mix together the oil, wine, honey and raisins. Add to the dry ingredients and blend with the hands. Let sit another 2 weeks. Then, if desired, grind to a fine powder. Kyphi is used in night rituals, to invoke Egyptian Goddesses and Gods and as general magickal Incense.

Kyphi

Needed:

- 3 parts frankincense
- 2 parts benzoin
- 2 parts myrrh
- 1 part juniper berries
- ½ part galangal
- ½ part cinnamon
- ½ part cedar
- 2 drops lotus bouquet
- 2 drops wine
- 2 drops honey
- Few raisins

Mix, burn, use as the last.

Lammas (Lughnassadh) Incense

Needed:

- 2 parts frankincense
- 1 part heather
- 1 part apple blossoms
- 1 pinch blackberry leaves
- A few drops of ambergris oil

Leo Incense

Needed:

- Herbs (in equal parts)
 - Orange peel
 - Galangal
 - Rue
 - Goldenseal
- Oil
 - Cinnamon

Leo Incense

Needed:

- 2 parts gum mastic
- 1 part sandalwood
- 1 part juniper berries

Use as a personal altar or household Incense to increase your powers.

Libra Incense

Needed:

- Herbs (in equal parts)
 - Clover
 - Benzoin
 - Lavender
 - Spearmint
- Oil
 - Lavender

Libra Incense

Needed:

- 2 parts sandalwood
- 1 part thyme
- Few drops rose oil

Use as a personal altar or household Incense to increase your powers.

Lock Incense

Needed:

- 3 parts frankincense
- 2 parts juniper berries
- 1 part vetivert
- ½ part cumin

To guard your home from thieves. During the day smolder this mixture in a censer before the front door, then move it to each opening in the house (doors, windows, cellars, etc.) through which thieves may enter. Visualize its smoke forming an invisible but impenetrable barrier. Move in a clockwise circle throughout your home, replenishing the Incense as necessary. Repeat monthly at the time of the Full Moon, if possible, or, use as needed. This is designed to "lock" your home against unwanted intruders — but don't forget to bolt the doors as well.

Love Incense

Needed:

- 2 parts sandalwood
- ½ part basil
- ½ part bergamot
- Few drops rose oil
- Few drops lavender oil

Burn to attract love, to strengthen the love you have, and to expand your ability to give and receive love.

Love Incense

Needed:

- 2 parts dragon's blood
- 1 part orris
- ½ part cinnamon
- ½ part rose petals
- Few drops musk oil
- Few drops patchouli oil

Burn to attract love, to strengthen the love you have, and to expand your ability to give and receive love.

Mabon (Autumn Equinox) Incense

Needed:

- 2 parts frankincense
- 1 part sandalwood
- 1 part cypress
- 1 part juniper
- 1 part pine
- 2 part oak moss
- 1 pinch pulverized oak leaf

Mars Incense

Needed:

- 4 parts benzoin
- 1 part pine needles (or resin)
- A scant pinch black pepper

Burn to attract its influences, or during spells involving lust, physical strength, competitions, ritual; concerning men, etc.

Mars Incense

Needed:

- 2 parts galangal
- 1 part coriander
- 1 part clove
- ½ part basil
- A scant pinch black pepper

Burn to attract its influences, or during spells involving lust, physical strength, competitions, ritual; concerning men, etc.

Mars Incense

Needed:

- 2 parts dragon's blood
- 1 part cardamom
- 1 part clove
- 1 part grains of paradise

Burn to attract its influences, or during spells involving lust, physical strength, competitions, ritual; concerning men, etc.

Medicine Wheel Incense

Needed:

- 2 parts sage
- 1 part sweetgrass
- 1 part pine resin or needles
- 1 part osha root (or angelica)
- Scant pinch tobacco

Burn during rites revering American Indian deities & spirits, & to attune with the energies of this land.

Meditation Incense

Needed:

- 1 part gum acacia (arabic)
- 1 part sandalwood

Burn a small amount prior to meditation to relax the conscious mind.

Mercury Incense

Needed:

- 2 parts benzoin
- 1 part mace
- ½ part marjoram
- Few drops lavender oil

Burn to invoke its powers, or during spells involving intelligence, travel, divination, etc.

Mercury Incense

Needed:

- 2 parts benzoin
- 1 part frankincense
- 1 part mace

Burn to invoke its powers, or during spells involving intelligence, travel, divination, etc.

Mercury Incense

Needed:

- 2 parts sandalwood
- 1 part gum mastic
- ½ part lavender
- Few drops lavender oil

Burn to invoke its powers, or during spells involving intelligence, travel, divination, etc.

Mexican Magic Incense

Needed:

- 2 parts copal
- 1 part frankincense
- 1 part rosemary

Smolder during Mexican-American folk magic rituals and spells.

Midsummer Incense

Needed:

- 2 parts sandalwood
- 1 part mugwort
- 1 part chamomile
- 1 part gardenia petals
- Few drops rose oil
- Few drops lavender oil
- Few drops yarrow oil

Burn at Wiccan rituals at the Summer Solstice or at that time of the year to attune with the seasons and the Sun.

Midsummer Incense

Needed:

- 3 parts frankincense
- 2 parts benzoin
- 1 part dragon's blood
- 1 part thyme
- 1 part rosemary
- 1 pinch vervain
- Few drops red wine

Burn at Wiccan rituals at the Summer Solstice or at that time of the year to attune with the seasons and the Sun.

Moon Incense

Needed:

- 2 parts frankincense
- 1 part sandalwood
- Few drops eucalyptus oil
- Few drops jasmine oil
- Few drops camphor oil

Burn to attract its influences, and also during psychic workings, love magick, healing, rituals involving the home and dream magick.

Moon Incense

Needed:

- 4 parts sandalwood
- 2 parts wood aloe
- 1 part eucalyptus
- 1 part pulverized cucumber seeds
- 1 part mugwort
- ½ part ranunculus blossoms
- 1 part selenetrope (May substitute Gardenia or jasmine for selenetrope)
- Few drops ambergris oil

Burn to attract its influences, and also during psychic workings, love magick, healing, rituals involving the home and dream magick.

Moon Incense

Needed:

- 2 parts juniper berries
- 1 part orris
- 1 part calamus
- Few drops spirits of camphor or camphor tincture or ¼ part genuine camphor
- Few drops lotus bouquet

Burn to attract its influences, and also during psychic workings, love magick, healing, rituals involving the home and dream magick.

Moon Incense

Needed:

- 2 parts myrrh
- 2 parts gardenia petals
- 1 part rose petals
- 1 part lemon peel
- ½ part camphor
- Few drops jasmine oil

Burn to attract its influences, and also during psychic workings, love magick, healing, rituals involving the home and dream magick.

Moonfire Incense

Needed:

- 1 part rose
- 1 part orris
- 1 part bay
- 1 part juniper
- 1 part dragon's blood
- ½ part potassium nitrate

Burn for divination, love and harmony. The potassium nitrate is included to make it sparkle and glow. Don't add too much thought or it'll explode!

Morrigan Incense

Needed:

- 1 ounce (30 grams) musk amberette
- ½ ounce (15 grams) dragon's blood (resin used in violin strings)
- 4 drops patchouli oil
- 4 drops civet oil
- 4 drops of blood from your own finger

Blend at the Dark of the Moon, put in a jar and bury in the earth for six weeks (a flower pot of peat in a cool cupboard will do).

Neptune Incense

Needed:

- ½ teaspoon myrrh gum
- 1½ teaspoon copal resin
- 1 tablespoon sandalwood chips
- 1 teaspoon dried Irish moss
- 3 drops oakmoss oil

Lay incense coals on a bed of sea salt. When the coals are hot, toss on mixture.

New Moon Incense

Needed:

- 3 parts frankincense
- 1 part sandalwood

Nine Woods Incense

Needed:

- Rowan wood (or sandalwood)
- Dogwood
- Poplar
- Juniper
- Cedar
- Pine
- Holly branches
- Elder (or oak)

Take sawdust of each, mix together and burn indoors on charcoal when a ritual fire is necessary or desired but not practical. The Incense emits the aroma of an open campfire.

Offertory Incense

Needed:

- 2 parts frankincense
- 1 part myrrh
- 1 part cinnamon
- ½ part rose petals
- ½ part vervain

Burn while honoring the Goddesses and Gods, and as an offering.

Opening Eyes to Spirit World

Needed:

- 1/3 teaspoon Mastic
- 1/3 teaspoon Amaranth
- 1/3 teaspoon yarrow

Ostara (Spring Equinox) Incense

Needed:

- 2 parts frankincense
- 1 part benzoin
- 1 part dragon's blood
- 2 parts nutmeg
- 2 parts violet flowers (or violet oil)
- 2 parts orange peel
- 2 parts rose petals

Pagan Power Incense

Needed:

- 1 tablespoon cinnamon
- 1 tablespoon anise seed
- 1 teaspoon nutmeg
- 1 teaspoon ginger
- 1 teaspoon dry lemon peel
- 1 teaspoon lemon extract
- 1 teaspoon peppermint extract
- Dry petals of 3 white roses

Pan Incense

Needed:

- 4 ounce dittany of Crete
- 1 dried vanilla bean
- 2 ounce gum benzoin
- 1 ounce sandalwood powder
- ½ ounce pine needles (cypress is better)
- ½ a dounceen goat hairs (if available)

Break up the Dittany of Crete flowers with your fingers, powder the vanilla, and mix all the ingredients thoroughly. (Incidentally, Dittany of Crete is an excellent herb for stews and casseroles, and for clearing the remnants of infection such as the common cold out of the system.)

Pele Incense

Needed:

- 2 parts frankincense
- 1 part dragon's blood
- 1 part red sandalwood
- 1 part orange peel
- 1 part cinnamon
- Few drops clove oil

Burn when needing additional strength for any ritual; when you feel manipulated by others, or for fire spells in general. Burn when you wish to be fulfilled with the power of Pele.

Pisces Incense

Needed:

- Herbs (in equal parts)
 - Lemon balm
 - Elder
 - Lemon peel
 - Orris root
- Oil
 - Lemon

Pisces Incense

Needed:

- 2 parts frankincense
- 1 part eucalyptus
- 1 part lemon peel
- Few drops sandalwood oil

Use as a personal altar or household incense to increase your powers.

Planetary Incense

Needed:

- 1 part myrrh
- 1 part gum mastic
- 1 part costus
- 1 part oponax
- 1 part storax
- 1 part thyme
- 1 part frankincense
- 1 part camphor
- 1 part red sandalwood
- 1 part wood aloe
- 1 part euphorbium (caution)

For general magickal workings. The baneful substance euphorbium, should be replaced with tobacco. gum arabic can be used in place of the storax. Gum oponax is unobtainable — use an oponax oil or gum arabic.

Prophetic Dream Incense

Needed:

- 2 parts frankincense
- 1 part buchu

Burn before bedtime to stimulate the psychic mind to produce future-revealing dreams, and to ensure that the conscious mind remembers them in the morning.

Prosperity Incense

Needed:

- 2 parts frankincense
- 1 part cinnamon
- 1 part nutmeg
- 1 part lemon balm
- 1 part citron

Burn to attract wealth.

Protection Incense

Needed:

- 2 parts frankincense
- 1 part dragon's blood
- ½ part betony

Burn for psychic protection.

Protection Incense

Needed:

- 2 parts frankincense
- 1 part sandalwood
- ½ part rosemary

Protection Incense

Needed:

- 1 part frankincense
- 1 part myrrh
- ½ part clove

Protection Incense

Needed:

- 2 parts frankincense
- ½ part cumin

Protection Incense

Needed:

- 4 parts frankincense
- 3 parts myrrh
- 2 parts juniper berries
- 1 part Rosemary
- ½ part avens
- ½ part mugwort
- ½ part yarrow
- ½ part St. John's Wort
- ½ part angelica
- ½ part basil

Psychic Incense

Needed:

- 3 parts frankincense
- 1 part bistort

Smolder to sharpen psychic powers.

Psychic Incense

Needed:

- 2 parts sandalwood
- 1 part gum acacia (or arabic)

Psychic Incense

Needed:

- 1 part frankincense
- 1 part sandalwood
- 1 part cinnamon
- 1 part nutmeg
- Few drops orange oil
- Few drops clove oil

Purification Incense

Equal parts by volume:

- Frankincense
- Hyssop

Purification Incense

Needed:

- 4 parts frankincense
- 2 parts bay
- 1 part camphor
- 1 pinch finely powdered salt
- 1 pinch sulfur

Burn to purify the atmosphere of a disturbed home. Leave the windows open and do not inhale the sulphurous fumes!

Purification Incense

Needed:

- 2 parts sandalwood
- 1 part cinnamon

Leave windows open

Purification Incense

Needed:

- 3 parts frankincense
- 1 part vervain

Rain Incense

Needed:

- 4 parts heather
- 1 part fern
- ½ part henbane

Burn out of doors on a deserted hill to attract rain. Do not inhale fumes!

"Raise the Dead" Incense

Needed:

- 1 part pepperwort
- 1 part red storax
- 1 pinch saffron
- Few drops musk oil

Compound and fumigate about the tombs and graves of the dead. This will cause spirits and ghosts to gather, at least according to some reports.

Riches and Favors Incense

Needed:

- 2 parts benzoin
- 1 part wood aloe
- ½ part pepperwort
- ½ part clove

Burn when you need favors and wealth.

Sabbat Incense

Needed:

- 4 parts frankincense
- 2 parts myrrh
- 2 parts benzoin
- ½ part fennel
- ½ part bay
- ½ part thyme
- ½ part pennyroyal
- ½ part Solomon's seal
- ¼ part rue
- ¼ part wormwood
- ¼ part chamomile
- ¼ part rose petals

Burn at Wiccan Sabbats.

Sacred Space Incense

(to clear and make pure an area)

Needed:

- 4 tablespoons cedar chips
- 1 tablespoon thyme
- 1 tablespoon sage
- 2 teaspoons rosemary
- 1 teaspoon cinnamon
- 1 pinch of salt
- 1 pinch of tobacco

Sagittarius Incense

Needed:

- Herbs (in equal parts)
 - Cinquefoil
 - Sage
 - Nutmeg
 - Betony wood
- Oil
 - Musk

Sagittarius Incense

Needed:

- 2 parts frankincense
- 1 part myrrh
- 1 part clove

Use as a personal altar or household Incense to increase your own powers.

Sahumeria Azteca Incense

Needed:

- 2 parts copal
- 2 parts frankincense
- 1 part rosemary
- 1 part sage
- 1 part lemongrass
- 1 part bay
- ½ part marigold
- ½ part yerba santa

For ancient Aztec rituals and all Mexican-American folk magic. Also use as a general purification Incense.

Samhain Incense

Needed:

- 3 parts rosemary
- 3 parts pine
- 3 parts bay
- 3 parts apple
- 2 drops patchouli oil

Saturn Incense

Needed:

- 2 parts sandalwood
- 2 parts myrrh
- 1 part dittany of Crete
- Few drops cypress oil
- Few drops patchouli oil

Burn for Saturn influences; also for spells dealing with buildings, studying past lives, banishing illness, pests and negative habits.

Scorpio Incense

Needed:

- Herbs (in equal parts)
 - Sandalwood
 - Boneset
 - Coltsfoot
 - Thyme
- Oil
 - Sandalwood

Scorpio Incense

Needed:

- 2 parts frankincense
- 1 part galangal
- 1 part pine resin (pitch)

Use as a personal altar or household Incense to increase your powers.

Scrying Incense

Needed:

- 1 part mugwort
- 1 part wormwood

Burn a small amount prior to scrying in a quartz crystal sphere, in flames, water, etc. Warning — smells bad!

Sight Incense

Needed:

- 2 parts gum mastic
- 2 parts juniper
- 1 part sandalwood
- 1 part cinnamon
- 1 part calamus
- Few drops ambergris oil
- Few drops patchouli oil

Mix, empower and burn to promote psychic awareness.

Solstice Citrus Incense

Needed:

- 1 tablespoon dry orange peel
- 1 tablespoon dry grapefruit peel
- 1 tablespoon dry lemon peel
- 1 teaspoon orange extract
- 1 tablespoon dry tangerine peel
- 1 teaspoon lemon extract

Spirit Incense

Needed:

- 1 part anise
- 1 part coriander
- 1 part cardamom

Smolder to cause spirits to gather.

Spirit Incense

Needed:

- 1 part sandalwood
- 1 part lavender

Burn on the altar to invite good energies (or spirits) to be present during magical rituals.

Spirit Incense

Needed:

- 2 parts sandalwood
- 1 part willow bark

Burn out of doors at night during the Waxing Moon.

Spirit Incense

Needed:

- 3 parts wood aloe
- 1 part costus
- 1 part crocus
- Few drops ambergris oil
- Few drops musk oil

Spirit Portal Incense

Needed:

- ½ teaspoon cinnamon
- ½ teaspoon lavender
- Pinch of wormwood

Spirits Depart Incense

Needed:

- 2 parts fennel seed
- 2 parts dill seed
- ½ part rue

Burn out of doors to drive away all evil spirits and vain imaginings.

Spring Sabbat Incense

Needed:

- 3 parts frankincense
- 2 parts sandalwood
- 1 part benzoin
- 1 part cinnamon
- A few drops of patchouli oil

Burn during spring and summer Sabbat rituals.

Study Incense

Needed:

- 2 parts gum mastic
- 1 part rosemary

Smolder to strengthen the conscious mind for study, to develop concentration and to improve the memory.

Success Incense

Needed:

- 3 parts wood aloe
- 2 parts red storax
- 1 part nutmeg

Burn for success in all undertakings. If red storax is unavailable, substitute frankincense or gum arabic.

Summer Solstice Incense

Needed:

- 3 parts frankincense
- 2 parts benzoin
- 1 part dragon's blood
- 1 part thyme
- 1 part rosemary
- Pinch of vervain
- A few drops red wine

Sun God Incense

Needed:

- Giant fennel
- 1 part rue
- 1 part thyme
- 1 part chervil seed
- 1 part pennyroyal
- ½ part chamomile
- ½ part geranium

For an incense, these ingredients should be either chopped up small or dried and ground, before blending. If you find the mixture too quick-burning, mix in a little gum mastic

Sun Incense

Needed:

- 3 parts frankincense
- 2 parts myrrh
- 1 part wood aloe
- ½ part balm of Gilead
- ½ part bay
- ½ part carnation
- Few drops ambergris oil
- Few drops musk oil
- Few drops olive oil

Burn to draw the influences of the Sun and for spells involving promotions, friendships, healing, energy and magickal power.

Sun Incense

Needed:

- 3 parts frankincense
- 2 parts sandalwood
- 1 part bay
- 1 pinch saffron
- Few drops orange oil

Burn to draw the influences of the Sun and for spells involving promotions, friendships, healing, energy and magickal power.

Sweet Dreams Incense

Needed:

- 100 grams powdered charcoal
- 25 grams wormwood
- 25 grams apple wood (sawdust)
- 15 grams lavender
- 8 grams saltpeter
- 1 ounce lavender oil
- 1 ounce patchouli oil

Talisman Consecration Incense

Needed:

- 2 parts frankincense
- 1 part cypress
- 1 part ash leaves
- 1 part tobacco
- 1 pinch valerian
- 1 pinch alum
- 1 pinch asafetida (caution)

Burn in an earthen dish and hold the talismans in the smoke. Warning: it smells!

Taurus Incense

Needed:

- Herbs (in equal parts)
 - Horehound
 - Mugwort
 - Oleander
 - Vervain
- Oil
 - Vervain

Taurus Incense

Needed:

- 2 parts sandalwood
- 2 parts benzoin
- Few drops rose oil

Use as a personal altar or household Incense to increase your powers.

Temple Incense

Needed:

- 3 parts frankincense
- 2 parts myrrh
- Few drops lavender oil
- Few drops sandalwood oil

Smolder in the temple or "magic room", or as a general magickal incense. Also increases spirituality.

Thank You Incense

(just to say thanks)

Needed:

- 2 tablespoons rosemary
- 1 tablespoon cinnamon
- 1 teaspoon sage
- 1 teaspoon allspice
- Dry peel of one lemon
- Dry petals of 3 roses
- 1 tablespoon almond extract

Thousand-Named Solar Incense

Needed:

- 3 parts frankincense
- 1 part clove
- ½ part red sandalwood
- ½ part sandalwood
- ¼ part orange flowers
- 3 pinches orris

Burn for Solar influences.

True Love Incense

Needed:

- 1 part cinnamon
- 1 part orris
- Few drops patchouli oil

Burn for true love.

Universal Incense

Needed:

- 3 parts frankincense
- 2 parts benzoin
- 1 part myrrh
- 1 part sandalwood
- 1 part rosemary

Burn for all positive magickal purposes. If used for negative magickal goals, it will cancel out the spell or ritual.

Venus Incense

Needed:

- 3 parts wood aloe
- 1 part red rose petals
- Few drops olive oil
- Few drops musk oil
- Few drops ambergris oil

Mix well and burn for Venusian influences, such as love, healing, partnerships and rituals involving women

Venus Incense

Needed:

- 1 part violets
- 1 part rose petals
- ½ part olive leaves

Mix well and burn for Venusian influences, such as love, healing, partnerships and rituals involving women

Venus Incense

Needed:

- 2 parts sandalwood
- 2 parts benzoin
- 1 part rosebuds
- Few drops patchouli oil
- Few drops rose oil

Mix well and burn for Venusian influences, such as love, healing, partnerships and rituals involving women

Very Fairy Incense

(use to invoke the little people and nature spirits)

Needed:

- 2 tablespoons dry tangerine peel
- 1 tablespoon anise seed
- 1 teaspoon thyme
- 1 teaspoon ginger
- 1 teaspoon cinnamon
- 1 teaspoon strawberry extract
- Dry petals of 1 pink rose

Virgo Incense

Needed:

- Herbs (in equal parts)
 - Bergamot
 - Fennel
 - Summer savory
 - Mint
- Oil
 - Rose

Virgo Incense

Needed:

- 1 part mace
- 1 part cypress
- Few drops patchouli oil

Use as a personal altar or household Incense to increase your powers.

Vision Incense

Needed:

- 3 parts cinquefoil
- 3 parts chicory root
- 1 part clove

Burn small amounts prior to psychic workings.

Vision Incense

Needed:

- 3 parts frankincense
- 1 part bay
- ½ part damiana

Burn small amounts prior to psychic workings.

Water Incense

Needed:

- 2 parts benzoin
- 1 part myrrh
- 1 part sandalwood
- A few drops lotus bouquet
- A few drops ambergris oil

Burn to attract the influences of this element, as well as to develop psychism, to promote love, fertility, beauty and so on.

Wealth Incense

Needed:

- 1 part nutmeg
- 1 part pepperwort
- 1 pinch saffron

Burn to increase wealth.

Wealth Incense

Needed:

- 2 parts pine needles or resin
- 1 part cinnamon
- 1 part galangal
- Few drops patchouli oil

Burn to increase wealth.

Wealth Incense

Needed:

- 2 parts frankincense
- 1 part cinnamon
- 1 part Nutmeg
- ½ part clove
- ½ part ginger
- ½ part mace

Burn to increase wealth.

White Light Delight Incense

(to invoke the white light of protection)

Needed:

- 1 tablespoon rosemary
- 1 tablespoon ginger
- Dry peel of one lemon
- Dry petals of 2 white roses
- 1 teaspoon vanilla extract
- 1 teaspoon almond extract
- 1 teaspoon coconut extract
- 7 crushed bay leaves

Witches' Sight Incense

Needed:

- 1 part gum mastic
- 1 part juniper
- 1 part patchouli
- 1 part sandalwood
- 1 part cinnamon
- Few drops musk oil
- Few drops ambergris oil

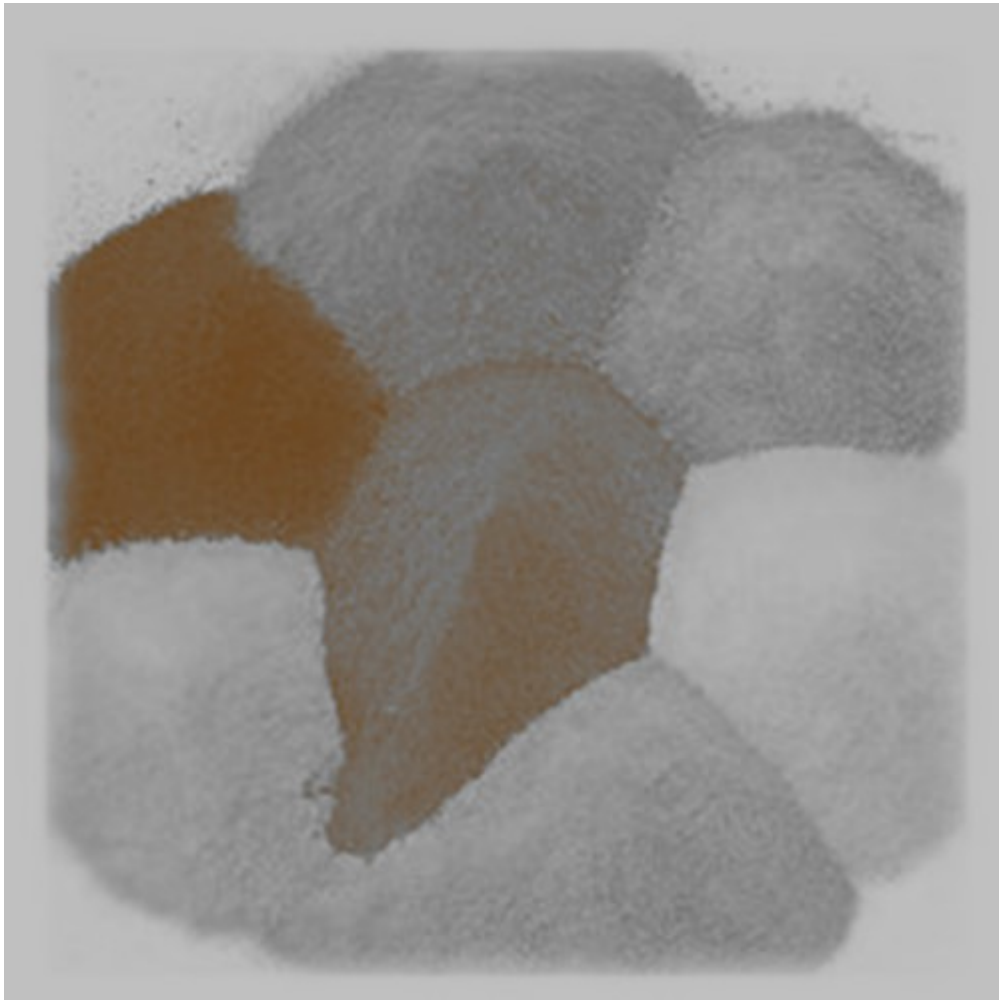
For Tarot readings, crystal ball readings, meditating.

Yule (Winter Solstice) Incense

Needed:

- 2 parts frankincense
- 2 parts pine needles
- 1 part cedar
- 1 part juniper berries

Miscellaneous Dry Potions



Bath Bombs

Needed:

- 2 tablespoons citric acid
- 2 tablespoons cornstarch
- ¼ cup baking soda
- 3 tablespoons coconut oil (or you can use any other emollient oil like almond oil, avocado oil or apricot kernel oil)
- ¼ teaspoon fragrance oil or essential oil
- 3 to 6 drops food coloring

Place all of the dry ingredients into a bowl and mix well.

In a small glass bowl melt oil then add fragrance and colorant.

Slowly add oil mixture to dry ingredients and blend well.

Take spoonfuls of the mixture and shape into balls. Balls should be about one inch in diameter.

Let the balls rest on a sheet of waxed paper for two to three hours. Gently reshape if needed.

Let the bombs (balls) dry and harden for twenty-four to forty-eight hours.

Gypsy Tobacco

Needed:

Equal amounts by weight:

- Coltsfoot
- Eyebright
- Wood betony
- Thyme
- Rosemary
- Spearmint

Herb Mix

Needed:

Equal amounts by weight:

- Coltsfoot
- Rosemary
- Wood betony
- ½ amount lavender
- ½ amount mullein
- ½ amount sage

Herb Mix

Needed:

Equal amounts by weight:

- Coltsfoot
- Knic-Knic
- Sage
- Lavender
- Wood betony

Intoxicating Smoke

Needed:

Equal amounts by weight:

- Damiana
- Gota Kola
- Hops
- Catnip
- $\frac{3}{4}$ amount spearmint
- $\frac{1}{2}$ amount yohimbe
- $\frac{1}{2}$ amount loebelia
- $\frac{1}{2}$ amount passion flower

Love-Drawing Powder

Needed:

- 1 tablespoon rose petals
- 1 tablespoon orris root
- ¼ teaspoon cinnamon bark
- ¼ teaspoon cloves
- 1 cup talc
- Mortar and pestle
- 9 red candles

In the mortar and pestle, grind them down to a fine powder. As you do so, pray over the herbs so that they will help to draw love into the life of the person who will wear them on their body.

When finished, the powdered mixture is then added to one cup of talc and blended well. This herb-talc mixture is then put on your altar, and a red candle is lit next to it. You will dedicate the love-drawing powder to a goddess or god of love, asking him or her to bless the powder so that it will bring love to the person who will wear it. This is done for nine days, lighting a new candle each day. When all the candles are burnt out, the powder is ready to wear.

Protection Powder

Needed:

- 1/8 teaspoon of cloves powder
- 1/8 teaspoon of fennel seed
- 1/8 teaspoon of devil's claw
- 1/8 teaspoon of sage leaf

Mix together and burn for cleansing and protection from negative energy and to protect you from evil spells. You can take this one from room to room in your home and let the smoke drift through the room cleansing the energy and bringing in protection. Be sure to open some windows to ventilate the room.

To Bar Negative Entry

Needed:

- 1 ounce (25 grams) ground cumin
- 1 pound (500 grams) sea salt

Mix well.

Start at the end of the driveway, beginning to the East, and go completely around the property, strewing along the edges of the property. Be sure you complete the circle and rejoin where you started.

Soaps



This section is for those people who love to take baths in preparation for rituals and spellwork but who find themselves temporarily or permanently lacking a bathtub. It's still possible to feel cleansed under the shower with the aid of liquid soap and essential oils. Use liquid castile soap for these soaps, and put them in small plastic bottles (the kind you get from places like the Body Shop, with removable squeeze-tops since the liquid soap blend is very runny). Castile soap is made from olive and (sometimes) coconut oils, and is very pure, mild and cleansing.

Basic Ritual Soap

Needed:

- Castile soap
- Water
- Essential oils

Mix equal parts castile soap and water and then add essential oils in the following proportions, drop by drop and mixing gently, until you reach the required strength of scent. This dilution of the soap is purely to make it last longer; use it full strength if you prefer.

Cinnamon Soap

Needed:

- Unscented glycerin soap
- 10 drops cinnamon oil
- 1 drop red food coloring (optional)
- Heavy saucepan
- Mold

Makes one 4-ounce bar

In a heavy saucepan, melt the glycerin soap over low heat until liquefied. Remove the pan from the heat and stir in the cinnamon oil and coloring until well mixed. Pour the soap into a mold and let set for three hours or until hardened.

Full Moon Soap

Needed:

- 3 parts sandalwood
- 3 parts jasmine
- 1 part lemon
- 1 part rose

Herbal Shampoo

Needed:

- ¼ cup your favorite herbal tea, strongly brewed
- 8 ounces liquid castile soap

Add soap to tea. Stir over low heat until well blended. Store in a capped bottle.

Purification Soap

Needed:

- 3 parts frankincense
- 2 parts rosemary
- 1 part basil

Sabbat Soap

Needed:

- 3 parts frankincense
- 3 parts sandalwood
- 1 part myrrh
- 1 part patchouli
- 1 part rose